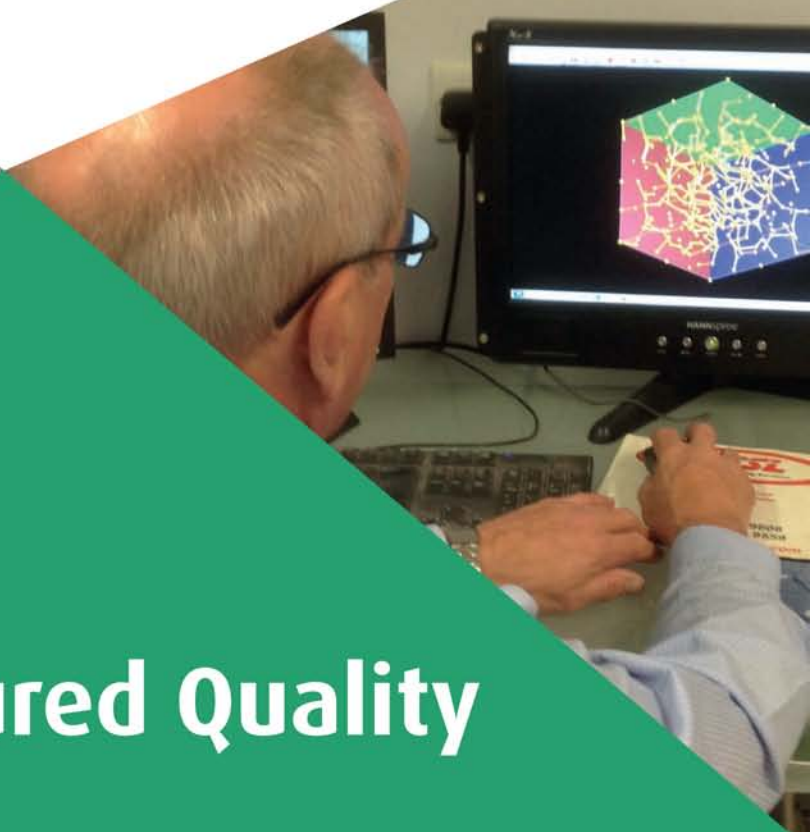
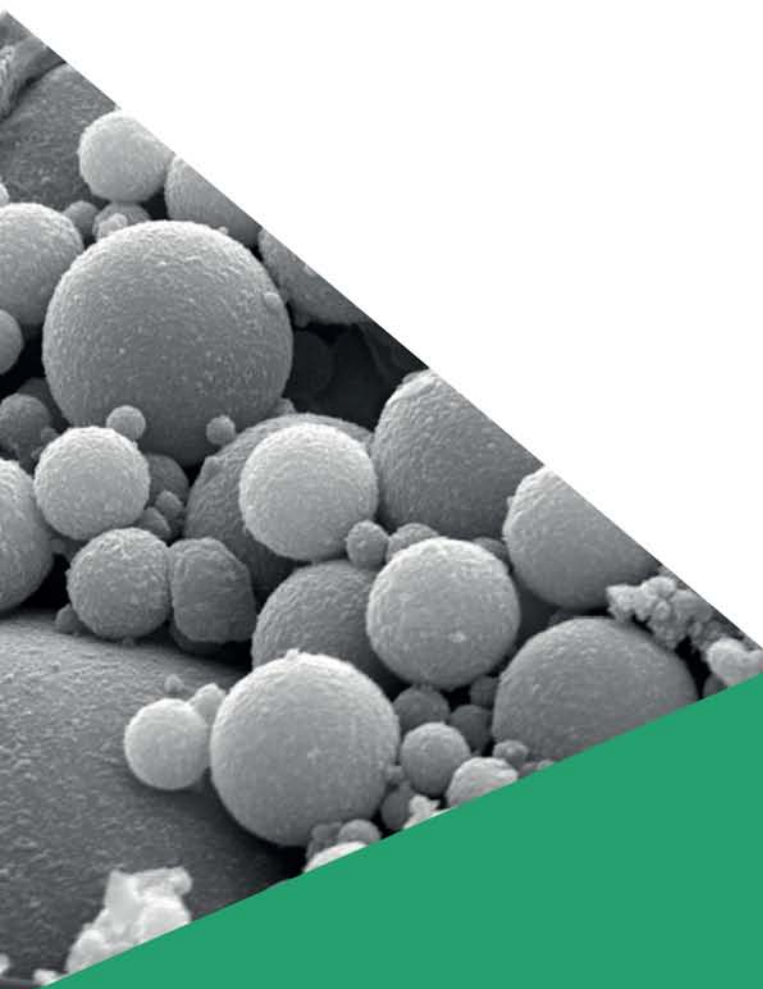




cenin
Technology



Cenin Assured Quality

Cenin Ltd, The Research Centre, Parc Stormy, Stormydown, Bridgend, Wales, CF33 4RS
Tel: +44 (0)1656 789970 Email: info@cenin.co.uk
www.cenin.co.uk



Cenin operates an extensive laboratory to ensure we provide quality products to our customers in a wide range of sectors.

From ready mixed concrete to block and paving manufacturing, we can simulate a wide range of site conditions. This includes contaminated waste treatments and treatment of oils to temporary access solutions and/or any site conditions where the soils need improvement in-situ to allow better reuse of the site or material. We routinely test for Quality Assurance and Compliance, maintaining process control and monitoring to ensure a consistent standard of product.

Operating our own XRD and XRF technologies allows us to benefit from chemical and physical analysis of our products.

Cement testing: EN 197-1, Fly ash testing
EN 450-1, Ground granulated blast furnace slag testing
Concrete testing: EN 12350 and EN 12390



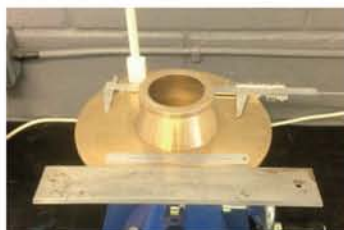
Physical Concrete Testing

We benefit from having a fully equipped concrete laboratory able to produce cubes for wet concrete applications and cylinders for semi-dry applications. This compliments our cement and mortar testing facility. The performance of all our cements and binders is verified in this facility and compared with the properties of specific types of Portland cements, aggregates and/or admixes.



Cement and Mortar Testing

It is essential that we carry out regular cement and mortar testing to ensure all our products comply with the required standards for performance. These constitute physical tests of cement and mortar to measure setting times, strength and expansion.



Chemical Testing and Monitoring

We are proud owners and operators of the latest XRD and XRF X-Ray technologies. These machines analyse chemical compounds and elements using X-Ray Diffraction and X-Ray Fluorescence respectively. The results are essential to our design engineering capabilities which enable us to develop better products for our customers.



Ground and Material Stabilisation Testing and Monitoring

We can offer preliminary testing solutions from cylinders which can bench-mark the suitability of our products, measured against the actual material you need treated. By trialing our products on-site, we can calculate the most cost effective solution and sustainable solution with the lowest carbon footprint.



Cement testing: EN 197-1, Fly ash testing
EN 450-1, Ground granulated blast furnace slag testing
Concrete testing: EN 12350 and EN 12390



Cement testing: EN 197-1, Fly ash testing
EN 450-1, Ground granulated blast furnace slag testing
Concrete testing: EN 12350 and EN 12390




cenin

Cenin Ltd, The Research Centre, Parc Stormy, Stormydown, Bridgend, Wales, CF33 4RS
Tel: +44 (0)1656 789970 Email: info@cenin.co.uk
www.cenin.co.uk

